

Ship™ Pro Training

What is Ship™ Pro?

PitneyShip™ Pro is a cloud-based solution that scales easily across your organization, allowing employees to create carrier shipping labels and print postage regardless of location. Real-time data provides better insights and visibility into your shipping activity, helping you save time and money on every package you send.

Table of Contents

- How to Log In to Ship™ Pro
- Internal UBS Support
- Single Sign On
- Ordering Supplies
- How to Print Stamps
- How to Align the Printer correctly to print stamps
- How to send Certified mail
- How to request a refund for shipments or stamps
- How to Ship a Package through USPS (Create a Shipping Label)
- How to See Shipping & Postage History
- How to track a shipment
- How to re-print a shipping label

How to Log In to Ship Pro

- **Link to the Application** – Goto/ShipPro or <https://Shipping360.PitneyBowes.com/>

You will be prompted for your e-mail, please enter your UBS e-mail address.

If you're prompted for a password, or you have no selections when you log in, please contact the UBS Workplace Services team for support: SH-COURIERS@UBS.COM

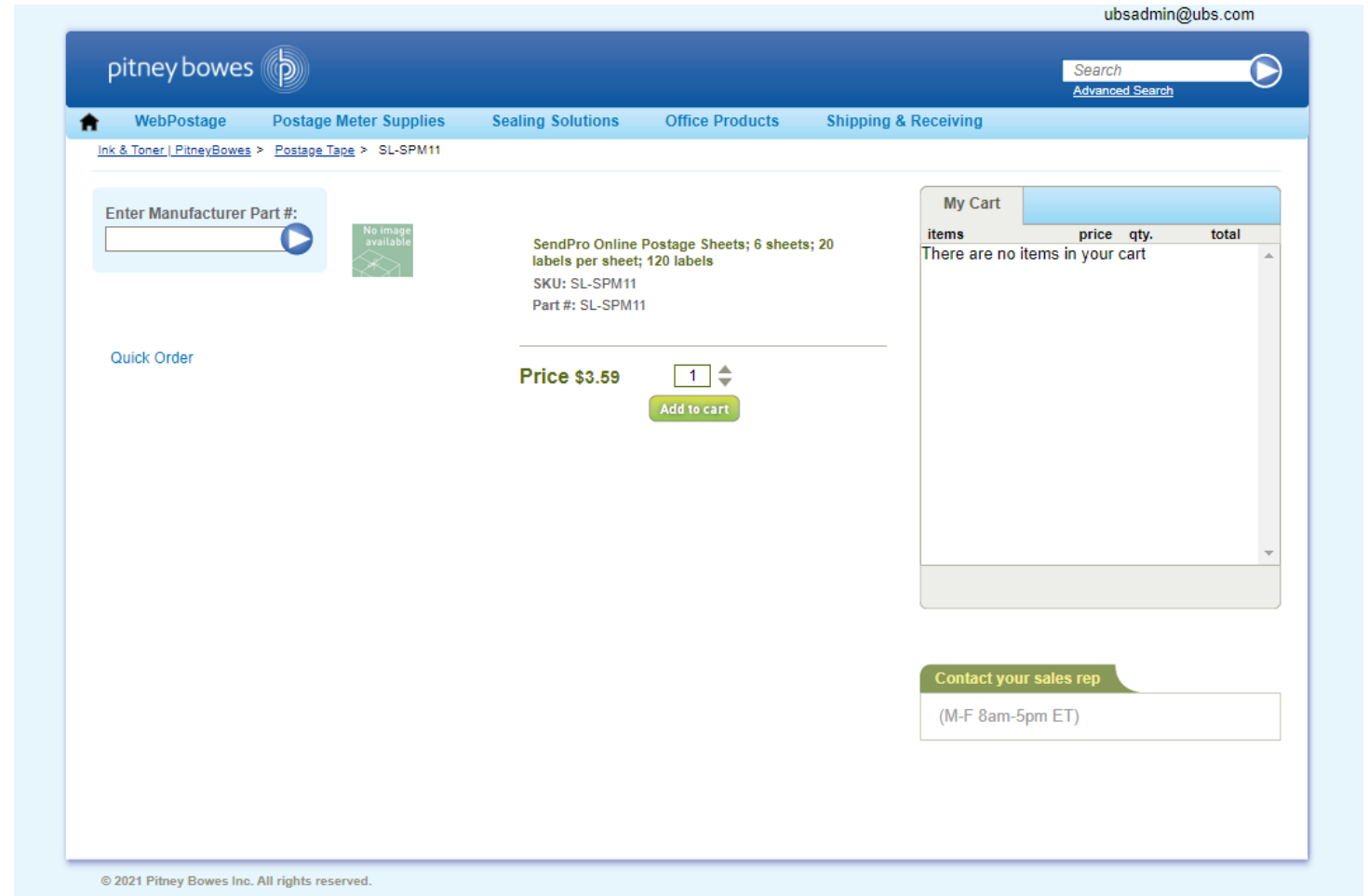
Please disregard any pop-ups.

- **Internal UBS Support** – Email your support requests to: SH-COURIERS@UBS.COM

Ordering Supplies


Stamp Sheet Supplies

- Goto/myshop
- Select Real Estate & Logistics and then Pitney Bowes Catalog
- Click buy from supplier
- Postage Sheets for Stamp Printing, 6 sheets; 20 labels per sheet; 120 labels
- Item #SL-SPM11





ubsadmin@ubs.com

pitney bowes

Search 
Advanced Search



WebPostage Postage Meter Supplies Sealing Solutions Office Products Shipping & Receiving

Ink & Toner | PitneyBowes > Postage_Tape > SL-SPM11

Enter Manufacturer Part #:  

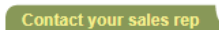
SendPro Online Postage Sheets; 6 sheets; 20 labels per sheet; 120 labels
SKU: SL-SPM11
Part #: SL-SPM11

Quick Order

Price \$3.59 


My Cart

items	price	qty.	total
There are no items in your cart			

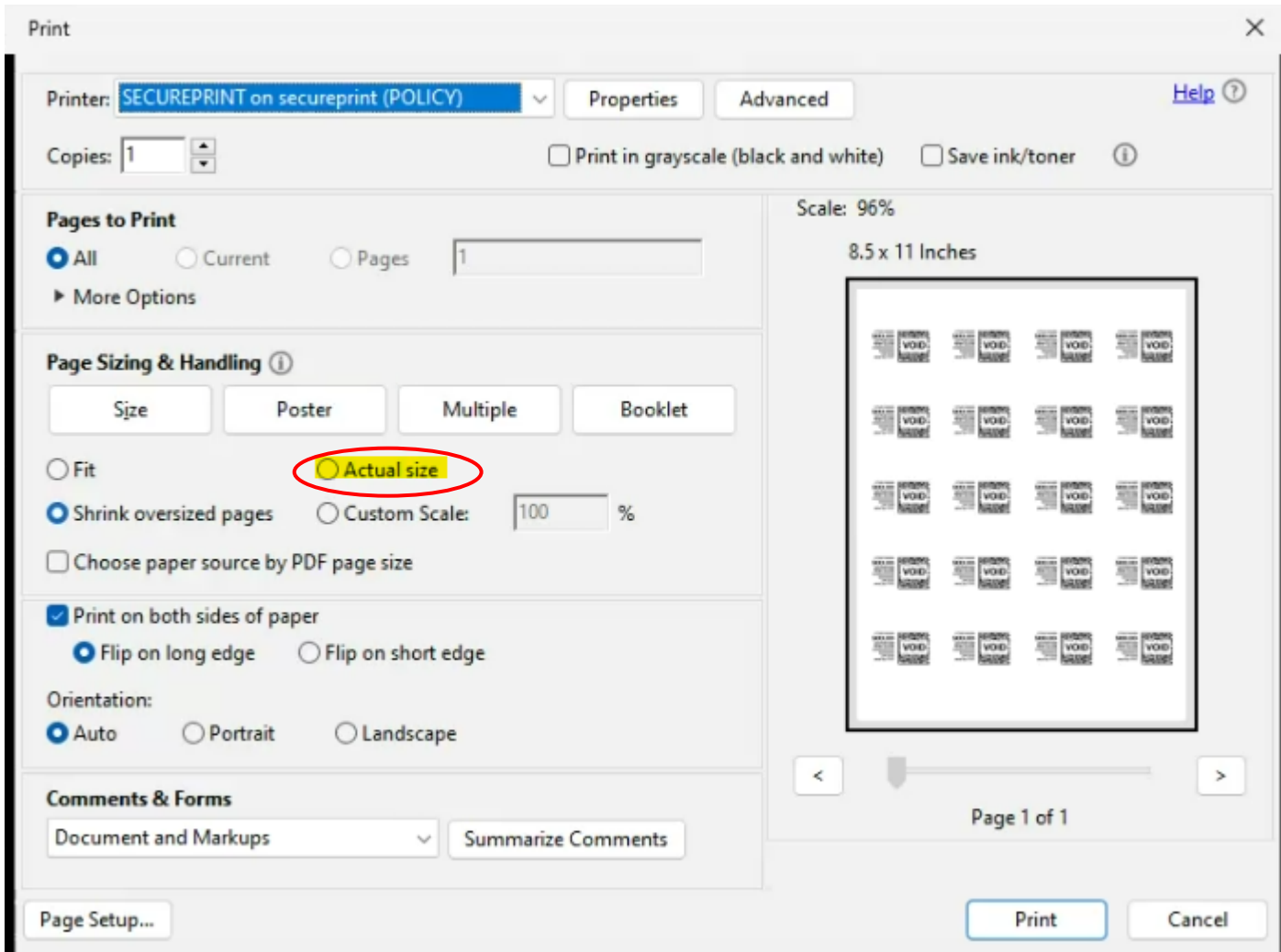

(M-F 8am-5pm ET)

© 2021 Pitney Bowes Inc. All rights reserved.

Returning Your Postage Meter

- Cancellation request to your current postage meter will be submitted to the vendor
- A return kit will be delivered to your location that includes withdrawal instructions (for any remaining funds on the meter), package and a return label.
- Remaining funds will be returned to the master postage account, and you will see a credit to your location/cost center.

How to Align the Printer Correctly to Print Stamps



Stamp Sheet Printer Alignment (Using Google Chrome – Recommended Browser)

When a user is doing a test print, in the printer dialog box, go to **Page Sizing & Handling**. In that section, click on “**Actual Size**”. Put the test print page into the printer and click **PRINT**. Once you get your test sheet from the printer you will be able to tell if it is aligned correctly.

- **Link to the Application - [link](#)**



ANY
QUESTIONS?

